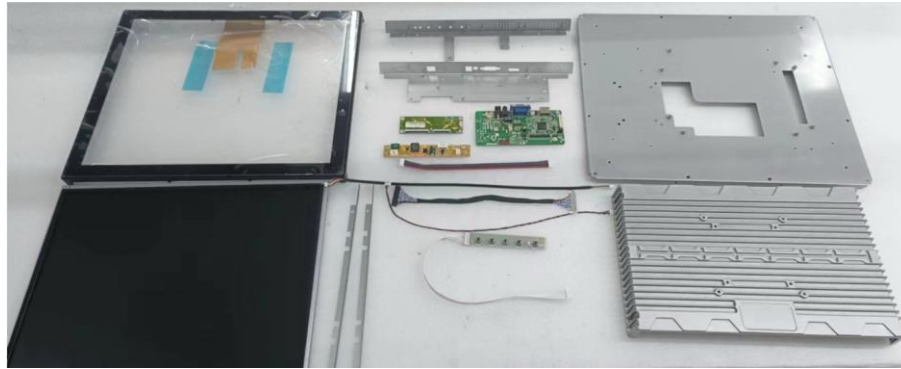


TDD-PTM-SKD210

21.5" PCAP Touch Display Modules



Overview

The **TDD** PTM-TDM series comes with industrial grade LCD display and project capacitive touch. It is also available with flexible options for LCD screens enhanced treatment such as **Anti-glare** surface treatment and **Optical Bonding** solution, delivers an industrial, reliable and cost-effective solution with outstanding image clarity & accurate touch response for OEMs & systems integrators. 7-98" sizes with rugged bezel & flat structure (**optional**), high durability and versatility for embedded applications which customers have maximum flexibility for mechanical design.

Features

- Touch thru glass (**optional for AG & Anti-mist Optical Bonding**) enabled with PCAP supports thickness up to 5mm
- Composed by **Industrial(optional)** TFT-LCD, CTP / AD / TP Board & power supply with cables and USB cables
- IP65 (front) for water and dust protection, flexible mounting in any table, kiosk, or cabinet design

Specifications

Panel

Panel

Diagonal Size	21.5"(16:9), 55cm, Active matrix TFT LCD (LED)
Active Area (mm)	478 mm x 269.6 mm
Resolution	1920 x 1080
Viewing Angle	Horizontal: 89° or 178° total / Vertical: 89° or 178° total
Number of Colors	16.7 million
Brightness (typical)	250 nits
Response Time-total	17 (Typ.)(G to G) ms
Contrast Ratio	1000:1
Input Video Frequency	Horizontal: 30 - 60 KHz / Vertical: 50 - 75 Hz

Touch

Touch Technology	PCAP (Projected Capacitive) - 10 Touch Capacity
Surface Treatment	Water, Dust & Vandal proof; Optional : Anti-glare, Anti-fingerprint, Anti-smudge, Anti-bacterial
Supported OS	Windows / Android / Linux / Mac

Interfaces / Connectors / Controls

Video Interfaces	VGA x1 / HDMI x1 / DVI x1 (opt.) / Display Port x1 (opt.) / USB x1 for Touch; HDCP: Yes
Connectors & Controls	Audio Mini jack x1 / DC x1; 5 OSD buttons

Power	Supply / Consumption: 100-240 VAC / 12VDC +/- 5%; 25W typical, 1.5W sleep, 0.5W off
--------------	-------------------------------------------------------------------------------------

Mechanical	Product Dimensions: 383.7x316x57.5(A) 51.5(S)mm/Weight(Unpacked / Packed):5.15/6.65kg Box Dimensions: 630 x 431 x 141mm / VESA Mounting: 75 x 75 / 100 x 100mm
-------------------	-------------------------------------------------------------------------------------------------------------------------------------------------------------------------------------

Environmental	Operating / Storage Temperature: -10°C to 60°C / -20°C to 60°C
----------------------	----------------------------------------------------------------

Accessories	Power adapter / cable, HDMI / VGA / Touch USB cable, flush mount brackets w/screws (opt.)
--------------------	-------------------------------------------------------------------------------------------

Others	MTBF / Warranty / Enclosure Color: 50,000 hours demonstrated / 1-year / black silver Ready for Use: 24/7, A = Aluminum Back, S = Steel Back in above " Mechanical "
---------------	-----------------------------------------------------------------------------------------------------------------------------------------------------------------------------------------------

* TDD (www.tddtouch.com, sales@tddtouch.com) reserves the right to change specifications without prior notice.